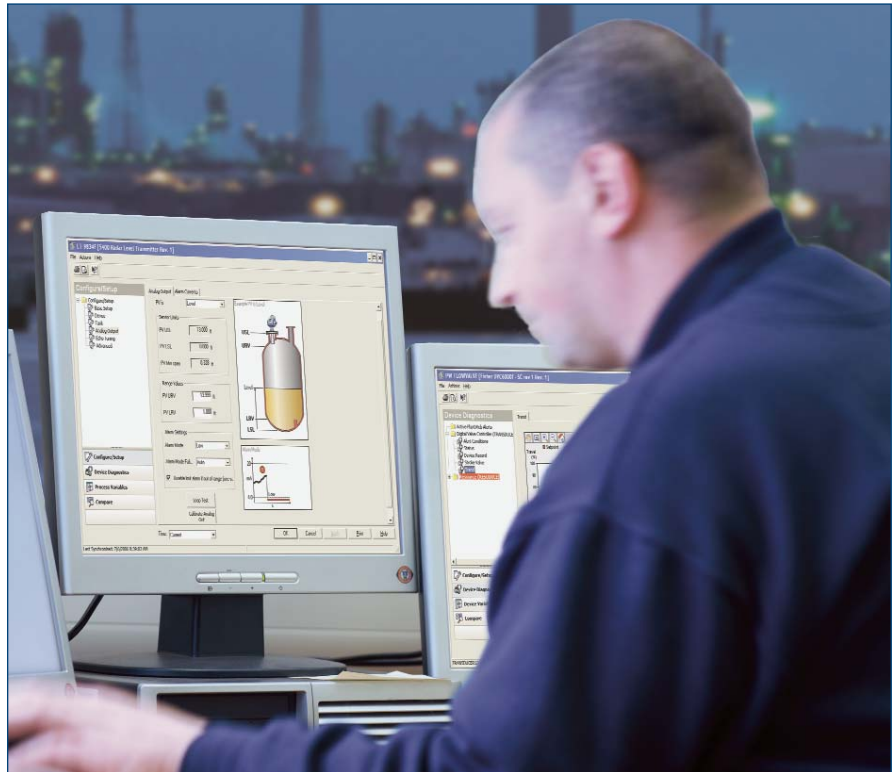


Effectively Employing AMS Device Manager for Instruments and Valves

- Increase effectiveness of your maintenance and operations staff by taking full advantage of AMS™ Suite: Intelligent Device Manager
- Leverage your technology investment by incorporating AMS Device Manager into daily work practices to drive productivity improvements
- Use predictive diagnostics from your smart instruments and valves to more effectively prioritize maintenance tasks



Improve operational value from your instruments and valves by taking AMS Device Manager to the next level.

Increase Productivity By Integrating Technology Into Your Daily Work Processes

When instrument and valve issues are affecting plant availability, critical devices can deliver predictive diagnostics to your team for fast, accurate decisions. How can technology be implemented into daily work processes so this information is most efficiently used? Fully implementing AMS Device Manager allows you to focus your limited resources on the right assets.

When you partner with Emerson's PlantWeb Services experts, we help ensure you are getting the most from your instrument and valve assets. PlantWeb Services are offered in scalable modules so when you are ready to move to the next level of support, we are ready to assist whether it is installing, implementing or incorporating the AMS Device Manager in your organization.



Install

INSTALL is designed to provide an interactive introduction to AMS Device Manager capabilities. An AMS Device Manager INSTALL-*certified* customer support specialist will get AMS Device Manager configured and working by doing the following:

- Review system architecture
- Install and license software
- Configure networks and establish device communication
- Create the initial database structure
- Complete the initial set up of the Alert Monitor
- Install the appropriate SNAP-ON™ applications
- Review basic software functions and navigation with user
- Review user's opportunities for formal training
- Back up the database

We believe that getting off to the right start is so important that every customer who purchases an online AMS Device Manager system of more than 25 tags will receive this service.

Implement

After you have completed INSTALL, IMPLEMENT is designed to structure your implementation of AMS Device Manager. A PlantWeb Services engineer will perform the following services:

- Perform facility walkdown and ensure all tags are identified
- Hold awareness training event to establish a common understanding of the process and gain organizational alignment
- Establish benchmarks and Key Performance Indicators (KPIs)
- Evaluate overall work flow processes and recommend industry best practices based on observations
- Validate priority of instrument and valve assets. Map into functional requirements and create a Maintenance Strategy Blueprint
- Re-engineer instrument and valve maintenance tasks
- Optimize the AMS Device Manager database, configuration, and alert settings
- Review new maintenance tasks and generate load table for CMMS
- Develop path forward considerations and present project report

INSTALL is a prerequisite to IMPLEMENT.

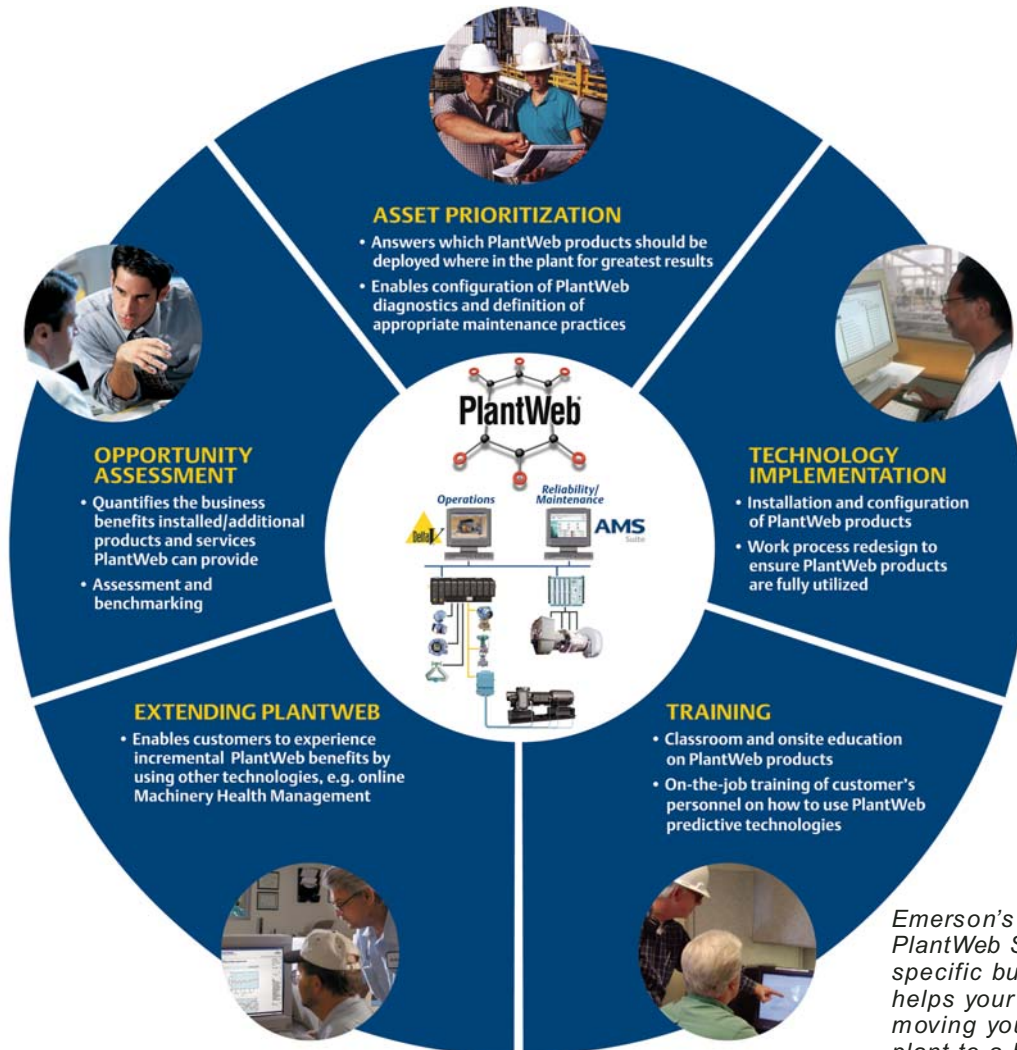
Incorporate

At many facilities, users find that integrating AMS Device Manager information with their enterprise asset management system allows measurement of real improvement. INCORPORATE provides for a PlantWeb Services engineer to perform the following services:

- Load re-engineered maintenance tasks into enterprise asset management system
- Provide mentoring and coaching to incorporate new maintenance tasks into CMMS
- Facilitate meetings to gain support for maintenance activities and process changes from various impacted departments
- Schedule a return visit to confirm results, benchmarks and improvement to plant's bottom line performance

INSTALL and IMPLEMENT are a prerequisite to INCORPORATE.

PlantWeb® Services for Asset Optimization



What Can PlantWeb Services Do For My Plant?

Through the expertise of Emerson's PlantWeb Services, the capabilities of AMS Device Manager can be fully deployed in your facility to drive improved decision-making. Streamlining daily maintenance, implementing predictive maintenance for enhanced performance, and operating with your maintenance resources fully optimized are a few outcomes from a PlantWeb Services engagement.

PlantWeb Services takes you a step further by re-engineering work tasks in your maintenance management system (CMMS/ERP) allowing you to incorporate AMS Device Manager's capabilities rather than using work processes that rely on traditional, less-effective means. For example, AMS Device Manager brings savings to basic activities such as the time technicians spend walking, locating, and returning items. Some of those activities may even be eliminated when AMS Device Manager is fully

deployed. The power of real-time field device diagnostics and AMS Device Manager is fully leveraged when the CMMS produces work procedures that use your technology investment. Similarly, taking full advantage of the AMS Device Manager application brings time savings to configuration, calibration and documentation tasks. PlantWeb Services for AMS Device Manager ensures re-engineered maintenance work processes to improve manpower efficiency and help you become a best cost producer.

Services Data Sheet

November 2006

| Module | Task | Duration (hours) | | Operations Area Supervisor | RESOURCES INVOLVED | | | | | Front Office | |
|-------------|--|------------------|----------|----------------------------|--|--------------------------------|--------------|----------------|----------------------|----------------|------------------|
| | | 25 tags | 200 tags | | Area Supervisor | Area Instrument & Valves Craft | Area Planner | Area Scheduler | Reliability Engineer | Safety Officer | Plant Leadership |
| INSTALL | Install, license, and configure software | 15 | 30 | | | ✓ | | | | | |
| IMPLEMENT | Ensure all tags are identified | 1 | 7 | | | ✓ | | | | | |
| | Awareness Training + Goals/KPIs* 1-2 hour lunch session | 1 | 2 | ✓ | ✓ | ✓ | ✓ | ✓ | ✓ | | ✓* |
| | Review Work Flow Execution | 2 | 2 | | | | ✓ | | | | |
| | Asset Priority/Blueprint 1-2 hour lunch session | 1 | 2 | ✓ | ✓ | ✓ | ✓ | ✓ | ✓ | | ✓* |
| | Re-engineer Maintenance Tasks | 2 | 13 | | (work performed by PlantWeb Services Engineer) | | | | | | |
| | Optimize AMS Device Manager | 1 | 8 | | | ✓ | | | | | |
| | Review Maintenance Tasks/ CMMS load table | 1 | 1 | | ✓ | ✓ | ✓ | ✓ | ✓* | | |
| | Path Forward/Project Report | 1 | 1 | ✓ | ✓ | ✓ | ✓ | ✓ | ✓ | | ✓ |
| | Project Management/ Document Research | 1 | 4 | | | | | | | | |
| INCORPORATE | Meet to adopt new tasks in CMMS | 6 | 8 | ✓ | ✓ | ✓ | ✓ | ✓* | ✓ | ✓ | |

*if available

PlantWeb Services are offered in scalable modules, allowing you to choose when you and your facility's schedule are ready for the next level of support. Emerson believes that every facility is unique and has its own maintenance needs. That's why Emerson will design a PlantWeb Services engagement schedule around your facility's unique needs.

Here is a sample schedule to give an idea of how INSTALL, IMPLEMENT and INCORPORATE will fit into your plant schedule and who will be involved in the various steps.

Emerson also uses Lunch and Learn sessions to optimize the time of plant personnel for minimal production impact.

PlantWeb Services for Instruments and Valves

INSTALL

| Part Number | Description |
|-----------------|--|
| PW-INST-DMXXXXX | XXXXX = number of tags (online) 25-300 (increments of 25), 300-500 (increments of 50), 500-2,000 (increments of 100), 2,000-5,000 (increments of 500), 5,000-20,000 (increments of 2,500) |
| PW-INST-DM | for all off-line tags |

IMPLEMENT

| Part Number | Description |
|-----------------|---|
| PW-IMPL-DMXXXXX | XXXXX = number of tags (online & off-line) 25-300 (increments of 25), 300-500 (increments of 50), 500-2,000 (increments of 100), 2,000-5,000 (increments of 500), 5,000-20,000 (increments of 2,500) |

INCORPORATE

| Part Number | Description |
|-----------------|---|
| PW-INCO-DMXXXXX | XXXXX = number of tags (online & off-line) 25-300 (increments of 25), 300-500 (increments of 50), 500-2,000 (increments of 100), 2,000-5,000 (increments of 500), 5,000-20,000 (increments of 2,500) |

Emerson Process Management
Asset Optimization Division
12001 Technology Drive
Eden Prairie, MN 55344 USA
T 1(952) 828-3206
F 1(952) 828-3033

©2006, Emerson Process Management.

The contents of this publication are presented for informational purposes only, and while every effort has been made to ensure their accuracy, they are not to be construed as warranties or guarantees, express or implied, regarding the products or services described herein or their use or applicability. All sales are governed by our terms and conditions, which are available on request. We reserve the right to modify or improve the designs or specifications of our products at any time without notice.

All rights reserved. AMS, PlantWeb and SNAP-ON are marks of one of the Emerson Process Management group of companies. The Emerson logo is a trademark and service mark of Emerson Electric Co. All other marks are the property of their respective owners.



PlantWeb Services for Asset Optimization ensure successful implementation of the AMS Suite and maximize the value realized by users.